



# The Shoulder Flexors

## Purpose:

Designed to **improve the strength and function of the shoulder flexors** (Anterior Deltoid & Biceps Brachii – long head, Coracobrachialis, Pectoralis Major – upper fibres). Maintenance of **glenohumeral (shoulder) joint health** and movement. The load placed upon the shoulder flexors during this exercise is relatively significant due to the impact of gravity and the length of the lever i.e. the straight arm with the weight (Powerball®) at the end.

*NOTE: This exercise incorporates **Thumb, Finger Flexors and Extensors & Wrist Flexors and Extensors** exercises as both the finger and wrist flexor and extensor muscles are required to maintain a firm grip on your Powerball®. It is the additional movements that recruit the other muscles in this exercise.*

## Useful For:

Anyone who needs or wants to improve the strength or maintain the condition of the shoulder flexors. Suitable for enhancing a wide variety of sports activities, especially those which require an over-arm throwing actions, such as; Tennis, rugby, badminton, softball, American football, baseball (especially pitching), climbing, javelin, pole-vault etc.

In the non-sporting arena, anyone involved in manual work or overhead work e.g. plumbers, electricians, mechanics, carpenters, plasterers etc.

Can be utilised as part of rehabilitation, recovery and maintenance following:

- **Sub-acromial bursitis**
- **Shoulder Impingement syndrome**
- **(Recovery from) dislocated or sub-luxated shoulder**
- **Adhesive Capsulitis (Frozen Shoulder) \***
- **Biceps strain**
- **(Anterior) Deltoid strain**

## Let's Begin

- 1 Grip Powerball® firmly in the palm of the hand and secure by gripping with thumb and four digits. We recommend that you get Powerball® moving in the usual way before assuming the start position - if you don't know how to, check out the **Getting Started** page on **Powerballs.com** for videos & instructions.
- 2 Begin with your arm by your side [see figure 1]. Palm should be facing the side of your leg and should be maintained in this orientation throughout the exercise.



*figure 1 - Start Position*



*figure 2 - Mid Position*

- 3 Flex the shoulder by raising your arm out forward while keeping it straight [see figure 2].

Continue until the hand is pointing straight up at the ceiling or as far as you can comfortably achieve while spinning your Powerball® at a moderate speed [see figure 3].

Because this exercise also utilises the effect of gravity, the flexion movement should be slow and the arm should also be returned slowly to the start position. This challenges the muscles on the upward and downward movement.



*figure 3 - Finish Position (straight arm)*

## Recommended Guideline Programme

**Initial Session:** 3 X 30 seconds with a 1 minute break between each one. Use this session to establish the RPM at which you are challenged but can still maintain a solid grip on Powerball®.

---

**Progression:**

- Week 1:** 3 X 30 seconds with a 1 minute break between each one on **alternate days**.
- Week 2:** 3 X 30 seconds with a 1 minute break between each one **daily**.
- Week 3:** 3 X 60 seconds with a 1 minute break between each one on **alternate days**.
- Week 4:** 3 X 60 seconds with a 1 minute break between each one **daily**.

**Further progression can be achieved by increasing the frequency, repetitions or Powerball® spin speed and duration.**

---

**Caution:** Because of the variety of shoulder problems that can be encountered you should seek the advice of a healthcare professional or rehabilitation specialist before using this exercise to address specific shoulder problems. When recovering from a shoulder dislocation care should be taken not to push the boundaries of the range of movement.

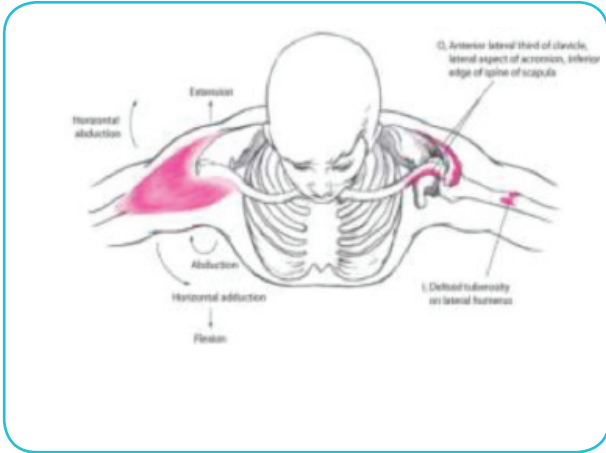
*\* Also, extreme care is needed in rehabilitation of adhesive capsulitis to avoid aggravating the joint capsule and triggering a recurrence.*

If you are experiencing pain or discomfort, consult a qualified healthcare practitioner before embarking on this exercise. Some muscle fatigue is to be expected with this exercise much in the same way your muscles might react to a gym workout. However, if you experience actual pain, you should reduce the exercise frequency, repetitions or duration.

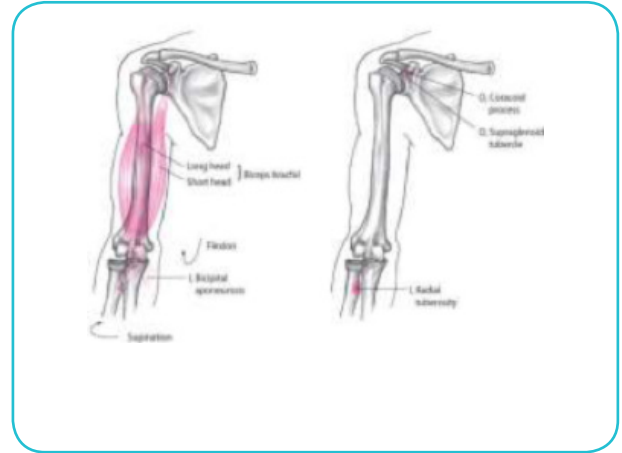
If the pain persists or increases, you should discontinue the exercise and consult a healthcare professional.

The Shoulder Flexors

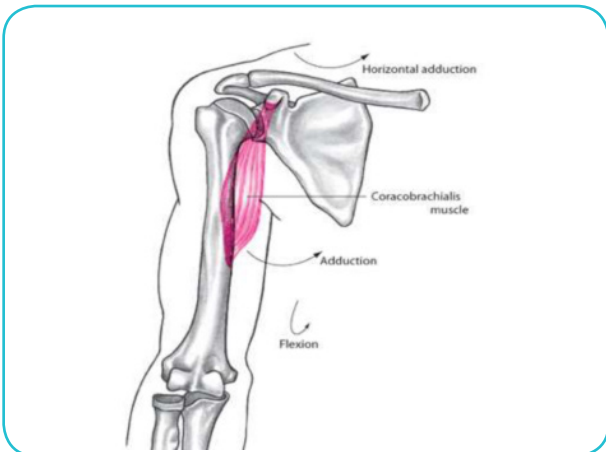
# Muscles involved in this exercise



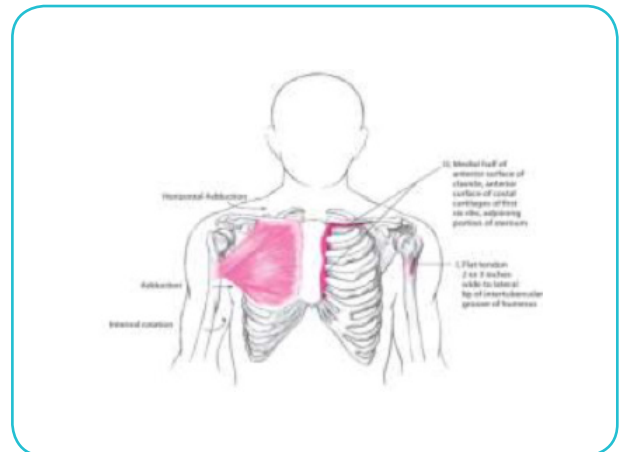
*Deltoid*



*Biceps Brachii*



*Coracobrachialis*



*Pectoralis Major*



## Remember

You are looking to achieve a smooth, progressive spin which will test your fingers by requiring them to grip Powerball® firmly as the speed increases; if you have strong, injury-free fingers, you may find that 5,000 - 6,000rpm isn't challenging the muscles sufficiently. Therefore simply increase the spin speed until you arrive at a point where there is gentle fatigue building in the tissue and you're having to work hard to maintain that firm grip around the shell to avoid dropping Powerball®. Holding this state for 30 - 60 seconds will produce definite results.



## Learn More

As always, progress is achieved by following a regular exercise programme, further details regarding usage frequency, repetition and spin technique can be found on our website [powerballs.com](http://powerballs.com).



## Important

Should you experience any pain or discomfort when exercising with Powerball® or in general, speak to your physio or qualified healthcare practitioner to get the best advice and support.